

HAWORTH

# PopUp Product Introduction

Sep 2020

# Content List



- Why PopUp
- Compact Collaboration
- Flexible Movement
- Vivid Design
- Finishes
- Certificates & Sustainability
- Application Scenario

# Why PopUp

# Why PopUp?

The PopUp community table provides a compact surface for individuals or small groups in a variety of spaces. With a range of organic shapes, widths, and heights, PopUp helps create inviting spaces that support collaborative work or socializing.

PopUp offers **Compact collaboration**, **Flexible movement**, and **Vivid design**.





# Compact Collaboration

PopUp provides compact surface for individuals or small groups in a variety of spaces to collaborate.

- Compact top dimension: 5 Width, 3 Depth.
- Power integration: USB Type A+C or Wireless chargers makes the collaboration more “powerful”.
- Bag hook: Provide a convenient place to stow personal belongs, making the table more usable.

		Width, w (mm)				
		1800	1600	1500	1400	1200
Depth, d (mm)	750	✓	✓	✓	✓	✓
	600	✓	✓	✓	✓	✓
	450	✓	✓	✓	✓	✓



Bag Hook



USB Type A+C



Wireless

# Flexible Movement

PopUp integrates mobility to ease the space arrangement according to activities and needs. Answers the impulse and flexible nature of collaboration.

- Caster: optional caster enables mobility to organize the space. The lockable caster ensures the stability in locked state.
- Heights: 1050 MMH / 915 MMH offers choice and comfort to support posture changes in the workplace.



With Glide



With Caster



915 WWH



1050 WWH

# Vivid Design

PopUp has an array of well-proportioned sizes, inviting top shapes, and two heights encourage collaboration and socializing. Vivid statement-of-line and design creates an inviting destination through its warm, welcoming aesthetics.

- Top shape: 3 top shapes including rectangle, oval and racetrack provide variety in a compact footprint.
- Edge-banding option: Rectangle edge / Sharknose edge coordinates with the design of worktop.



Rectangular top



Oval top



Racetrack top



Rectangle edge



Sharknose edge

# Vivid Design

- Accent plate: Provide a pop of color to dress up or down.
- Cable riser: Go through the wire to keep it concealed, providing a concise appearance.



With Accent plate



Without Accent plate



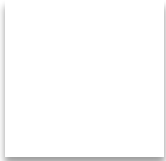
With Cable riser



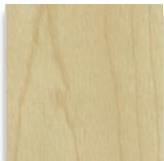
# Finishes

# Finish – LPL / HPL / Metal

LPL



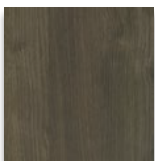
AHF0W  
FSC White



AHFCM  
FSC Clear Maple



AHFNA  
FSC Natural Ash

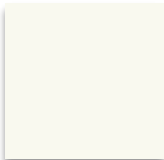


AHFLG  
FSC Logan Walnut

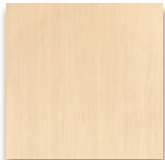
HPL



H0AE  
Maple



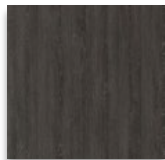
H0AK  
Chalk



H0NA  
Natural Ash



H0TH  
Thermo Walnut



H0LG  
Logan Oak



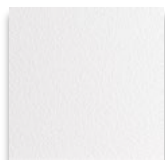
H0BL  
Blacken Legno



H0CC  
Natural Beech

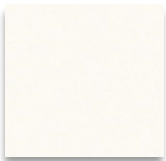


H0CE  
Light Gray



H0WC  
AllWays White

METAL



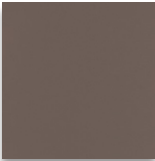
TRMTW  
Matte EU White



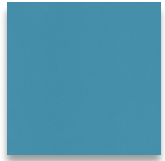
TRMWC  
Matte Allways White



TRMTB  
Matte EU Black



TRM1M  
Matte Lava



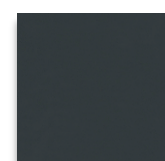
TRM1G  
Matte Blue Jay



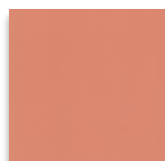
TRM1H  
Matte Terra



TRM1J  
Matte Sky Blue



TRM1N  
Matte Night



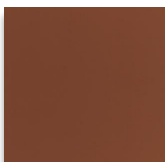
TRM1P  
Matte Seville



TRM1Q  
Matte Park Green



TRMCT  
Matte Chartreuse



TRMRR  
Matte Rusty Red

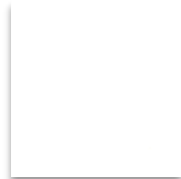


TROLE  
Metallic Silver

# Finish – Plastic



+



TR0JU snow

TR0JY white



+



TR0JX smoke

TR0JX smoke



TR00F Black

# Certificates & Sustainability

# Certificates & Sustainability

- BIFMA Certificated
- GREENGUARD
- FSC (HPL and LPL)



# Electronics Certificates

Power Plug	Code	Region	Certification	Certificate Mark
China Standard	CH	China	CCC	
UK Standard	UK	Hongkong, Malaysia, Singapore	BS	
Australia Standard	AU	Australia, New Zealand	SAA	
India Standard	ID	India	BIS	
Japan Standard	JP	Japan	PSE	



# Redefine Space with PopUp

# Individual Workspace

The individual workspace is the primary location for non-mobile workers during the day. Providing a PopUp table within the workstation or nearby offers ready access to a worksurface for impromptu collaboration or a place to step away from the desk and change postures. It can also be a good choice to use when working from home under the situation of Covid-19.



# Collaborative Area

Spaces where people come together to collaborate and brainstorm are often designed with interactive technology. Providing a variety of seating along with standing-height table options improves engagement and inspiration.



# Community Space

An informal community space provides an area away from workstations where people can gather, whether to work or socialize. Pairing PopUp with lounge seating gives them variety and choice based on posture preferences and activities.



# Project Room

The table serving in a project room should offer a dedicated space where team members can focus, strategize, plan, and display ideas. A project room should include a variety of visual display options and mobile furniture that allows users to change posture and orientation throughout the duration of the project.



# Training Room

From presentations to group collaboration, today's training rooms are dynamic spaces where staying alert and inspired are key. PopUp are nimble enough to support engaged user postures while accommodating personal items with optional bag hooks for convenient access. The compact surface and option for casters encourage people to move around with flexibility for a variety of group activities.





# Thank you!